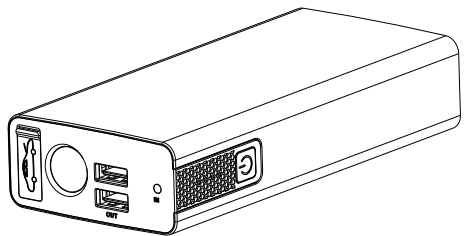


POWERTECH USER MANUAL

MODEL: MB3757

USE PRODUCT ONLY AS INTENDED!



PLEASE READ THE "IMPORTANT SAFETY INFORMATION GUIDE" BEFORE PROCEEDING.

DANGER-WARNING
PRIOR TO USE, READ AND UNDERSTAND PRODUCT SAFETY INFORMATION BOOKLET AND THIS USER'S MANUAL.

Failure to follow the instructions may result in **ELECTRICAL SHOCK, EXPLOSION, or FIRE**, which may result in **SERIOUS INJURY, DAMAGE TO DEVICE or PROPERTY**. Do not discard this information.

DISTRIBUTED BY:
TechBrands by Electus Distribution Pty. Ltd.
320 Victoria Rd, Rydalmere NSW 2116 Australia
Ph: 1300 738 555 Int1: +61 2 8832 3200
Fax: 1300 738 500 www.techbrands.com
Made in China



WELCOME

Thank you for purchasing the MB3757. The MB3757 is an ultra-compact Jump-Starter that can also charge your USB Devices such as Phones, Tablets, Go-Pro Cameras, GPS and much more. The MB3757 is charged from 15V/1A home charger. Please read and understand the USER Guide and product Safety information before operating the product.

TIPS: PLEASE DON'T USE OUR JUMP STARTER TO START YOUR CAR IMMEDIATELY WHEN IT CANNOT BE STARTED. USE OUR SMART CLAMPS TO CHECK THE SITUATION OF YOUR CAR'S BATTERY FIRST. HOW? READ PAGE 3-4.

GETTING STARTED

The MB3757 comes partially charged out of the box and should be fully charged prior to use. Carefully read and understand the vehicle owner's manual on specific precautions and recommended methods for jump starting the vehicle. Make sure to determine the voltage of your system and type of battery by referring to your battery owner's manual prior to using this product.

BEFORE CONNECTING TO ANY BATTERY

Before connecting to the battery, verify that you have a 12-volt vehicle system. The MB3757 is not suitable to jump-start any other voltage of battery. Identify the correct polarity of the battery terminals on the battery. The positive battery terminal is normally **RED** and marked by these symbols and letters (POS, P, +). The negative battery terminal is typically **BLACK** and marked by these letters or symbols (NEG, N, -). Do not make any connections to the carburetor, fuel lines, or thin metal parts for grounding. These instructions are for a negative ground system (most common). If your vehicle is a positive ground system (very uncommon), follow the instructions in reverse order.

1

SAFETY + PRECAUTIONS

Read and understand all safety information before using this product. Failure to follow these safety instructions may result in electric shock, explosion, fire, which may result in serious injury or property damage.

- Do not leave the product in, or expose product to extremely high temperatures such as on dashboards or other extremely hot areas above 70 °C.
- Do not use product for any use other than intended.
- Do not use jump-start port to power devices, it is ONLY for Jump-Starting.
- Do not jump-start with less than 3 lights lit on capacity indicator
- Do not Jump-start more than 4 seconds per attempt (overheating may occur)
- Do not Jump-Start more than 3 attempts in a row without allowing to cool.
- Do not allow the MB3757 to become wet, do not immerse in water
- Do not operate the appliance in explosive atmospheres, such as in the presence of flammable liquids, gases or dust
- Do not modify or disassemble, there are no serviceable parts inside
- Do not leave the MB3757 connected to vehicle. Remove within 30 seconds of starting vehicle
- Do not clamp the Red and Black Clamps together
- Do not leave battery products unattended while charging
- Do not charge frozen batteries, charge only between 0°C and 50 °C
- Do not store in locations where the temperature may exceed 70 °C

OPERATING PRECAUTIONS

- Make sure the BLUE PLUG for the JUMPER-Clamps is plugged and seated fully into the MB3757. This connection must be good or it could over-heat the unit.
- Make sure to check all the battery connections are clean. Remove corrosion or dirt that prevents a solid connection of clamps to vehicle battery terminals.
- Make sure clamps have a good "bite" on battery Terminals for the most power.
- Make sure the MB3757 has a minimum 3 lights on the Capacity indicator lit before Jump-Starting
- Make sure to remove the product from the vehicle battery within 30 seconds of jump-Starting.
- Remove Clamps from MB3757 when not in use

2

INSTRUCTIONS OF SMART CLAMPS

HOW TO START A CAR

1. Connect the red clamp to the positive terminal (+) and make the connecting area as big as possible;
2. Connect the black clamp to the negative terminal (-) and make the connecting area as big as possible;
3. Plug the smart clamps into the jump starter, do plug completely;
4. Press the button on the box of smart clamps long until the blue light is on, then the green light will be on automatically soon afterwards;
5. Make sure the operation light (GREEN) is on automatically and there is "di, di, di..." sound, then it can start the car;
6. After starting the car, please remove the jump starter first then remove the clamps from the car's battery;

MANUAL MODE OF THE SMART CLAMPS

When the operation light (GREEN) cannot be on automatically, then there is manual mode. Plug the smart clamps to the jump starter, connect the clamps to the car battery, red clamp to the positive terminal (+) while black clamp to the negative terminal (-); then press the switch button on the box of smart clamps until the blue light is on, and press again until the green light is on. Then you can start the car. Such manual mode can last 20 seconds. And when the smart clamps are in Manual Mode, do not do shortage connection and reverse polarity connection.

WHEN THE STATUS LED SHOWS A STEADY GREEN, ANY REVERSE POLARITY AND SHORT CIRCUIT IS PROHIBITED.

USING THE SMART CLAMP ON ITS OWN TO CHECK THE SITUATION OF THE CAR'S BATTERY

Do not connect the smart clamps to the jump starter. Just connect the clamps to the car's battery directly, red clamp to the positive terminal (+) while black clamp to the negative terminal (-); then press the button on the box of smart clamps until the lower blue light is on together with the upper light which can last for about 5 seconds. The color of the upper light indicates the condition of the car's battery: green->normal; red->low power; flashing red-> breakdown.

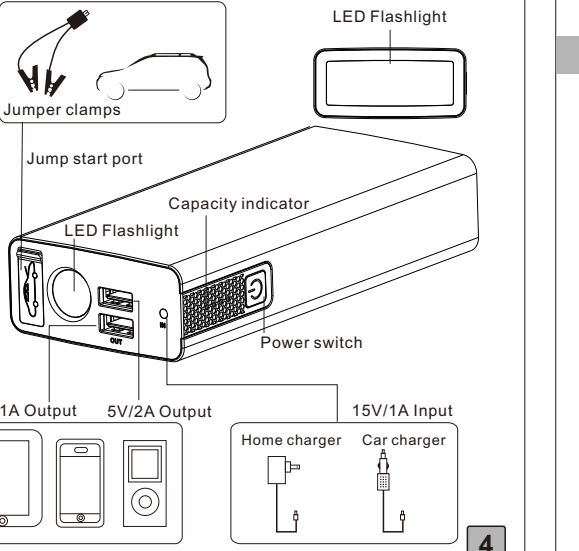
3

INSTRUCTIONS OF SMART CLAMPS CONTINUED

WARNING FUNCTION

USING THE SMART CLAMP WITH THE CAR JUMP STARTER
Connect the smart clamps to the car jump starter. Then attach the smart clamps to both terminals of the car battery. When the red LED lights up and the buzzer beeps continuously, this would mean 3 things namely: (1) you have connected the clamps in reverse polarity to the car's battery terminals, (2) the car battery is in good condition, and (3) the smart clamp experiences a break down. And, when you have accidentally connected the clamps in short circuit fashion, don't worry, no spark will happen. Thanks to its short circuit protection feature.

PRODUCT OVERVIEW



4

INCLUDED KIT ITEMS

- 1. MB3757 POWER SUPPLY..1PC
- 2. JUMPER CLAMPS.....1PC
- 3. INTO-1 USB CABLE.....1PC
- 4. HOME CHARGER.....1PC
- 5. CAR CHARGER.....1PC

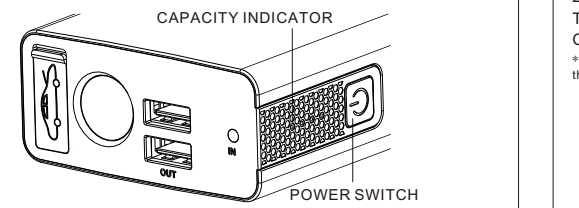
PRODUCT SPECS

Model: MB3757
Capacity: 11100mAh(41.07Wh) Full charging time: ≤4.5 hours
Size: 142*66*30mm(L/W/H) Starting current: 300A
Weight: 420g Peak current: 450A
Output: 5V/2A 5V/1A Operating temperature: 0°C-60°C
12V Jump Starter Storage temperature: -10°C-60°C
Input: 15V/1A

PRODUCT USE

CHECKING THE STATE OF THE CHARGE

1. To check the state of charge on the MB3757 press the Power Switch.
2. The MB3757 has a lighted capacity indicator which will show the state of charge
3. Each light lit is equal to 25% capacity



POWER INDICATION COMPARISON TABLE

Power indicator lights	○○○○	○○○○	●○○○	●●○○	●●●○	●●●●
Corresponding power	0%	10%	≤25%	50%	75%	100%
	○Off	○Flash	●on			

5

PRODUCT USE CONTINUED

Unit can charge electronic devices until no more light is lit, but should only be used to jump-start with a minimum of 3 lights lit.

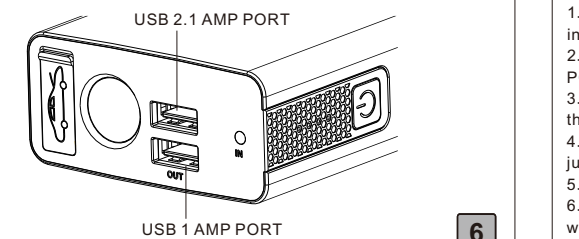
DO NOT JUMP START VEHICLES WHEN CAPACITY IS BELOW 75%(3 Capacity lights on)

CHARGING THE MB3757

- The MB3757 comes with a 15V-1A home charger to charge it.
1. Simply plug the home charger plug into the Input Charging Port on the MB3757 and Plug the other end of the home charger into a socket to begin Charging.
 2. When charging, the indicator lights will flash one by one. The number of solid indicator lights lit indicates the charge level. All lights solid indicates a fully charged MB3757. Remove from Charger when fully charged.

CHARGING USB DEVICES

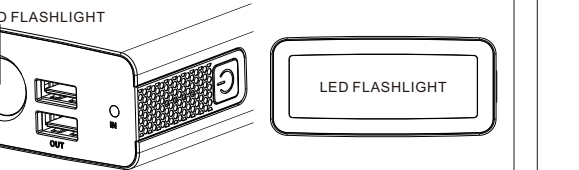
- The MB3757 can charge USB 5V devices at 2.1Amps or 1Amps.
1. Plug the provided 3 into 1USB or any standard USB Cable into any USB Output Port on the MB3757; plug the other end of the cable into the device you are charging.
 2. Press the power switch to begin charging your device.
- The 2.1 Amp or 1 Amp port can charge devices like smart Phones, Tablets, Cameras and more. It offers fast charging capability.
- *Note: The number of times devices can be charged will vary depending on the size of your device's battery.



6

LED FLASHLIGHT & FLASHER OPERATION

1. Press Power Switch Button twice to start the top LED Flashlight, then the top LED has 3 light patterns (illumination, SOS, Fast Flashing) if you press lightly. You can cycle to the next LED pattern by pressing the Power Switch again.
 2. Press and hold Power Switch Button for 3 seconds to start the bottom LED, then the bottom LED has 2 light patterns (normal, orange flash). You can cycle to the next LED pattern by pressing the Power Switch again.
 3. After the last flash pattern the unit will turn off the lights
- *Note: The orange flashing pattern is only a novelty, and not to be used in emergency.



JUMP STARTING A VEHICLE

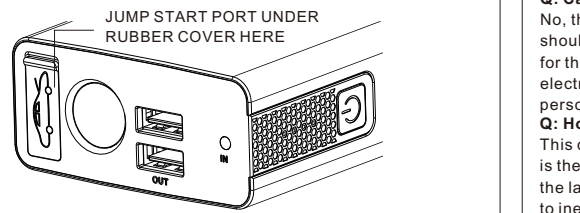
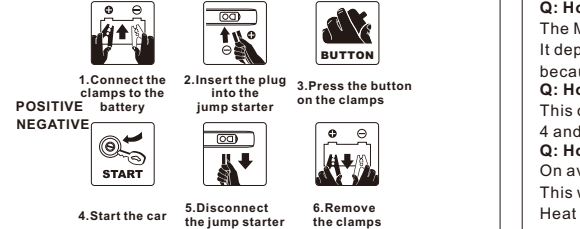
Make sure the MB3757 has a minimum of 3 lights lit on the capacity indicator before Jump-Starting. Make sure you are connecting to a 12V system. Make sure connections with the clamps to the battery are clean and with a good "bite".

1. Connect the JUMPER-CLAMPS to the MB3757. Push the Clamps fully into the Jump-Start Port on the MB3757.
2. Connect the Clamps to the vehicles battery, RED CLAMP to the vehicle's POSITIVE Terminal (+), BLACK CLAMP to the NEGATIVE Terminal (-).
3. Press the button on the box of smart clamps long until the blue light is on, then the green light will be on automatically soon afterwards;
4. Make sure both blue and green led lights on the box of jumper clamps are on.
5. Then turn on the key and start the car.
6. Once the Vehicle is started disconnect the Clamps from the vehicle within 30 seconds.

7

JUMP STARTING A VEHICLE CONTINUED

REFERENTIAL STEPS FOR STARTING A VEHICLE



FREQUENTLY ASKED QUESTIONS

- Q: How do I turn off the MB3757?**
The MB3757 will automatically power-off when it is not powering anything, usually in about 20 seconds. Disconnect Clamps when not in use.
- Q: How many times can the MB3757 charge a Cell Phone?**
The MB3757 can charge the average Cell phone about 3 times depending on the size of the cell phone's battery. It has 11100mAh of capacity.
- Q: How many times can it charge a Tablet?**
It depends on the size of the Tablet's battery. The MB3757 can generally charge a Tablet from 2-3 times.

8

FREQUENTLY ASKED QUESTIONS CONTINUED

- Q: How long does it take to full charge?**
The MB3757 can fully charge from completely dead in 4-5 hours if there is some charge in the MB3757 it can charge in much less time.
- Q: How long will it take to charge my cell phone?**
The MB3757 can charge a phone in about 40 minutes to one hour. It depends on the phone, but the MB3757 does charge USB Devices fast because it has a 2 Amp charge rate at the USB port.
- Q: How many times can it start a car?**
This depends on the size of the motor and state of charge, but regular 4 and 6 cylinder cars about 10 times or more. V8s about 5 times in a row.
- Q: How long can the MB3757 hold a charge?**
On average the MB3757 can hold a charge for up to 6-months. This will depend on the conditions it is stored in. Heat and cold can affect this. It is best to check the state of charge at least once every 1-2 months.
- Q: Can I use the Jumper Clamps or Starter Port to power other things?**
No, this should not be done. The Jumper Clamp port and clamps should only be used to jump-start vehicle with a minimum of 3 lights lit for the state of charge/capacity. Other uses such as powering other electronics through this port will ruin the device and could cause personal property damage, explosion or fire.
- Q: How big a motor can the MB3757 Start?**
This depends on the vehicle. For gasoline engine, 5L displacement is the largest we recommend; for diesel engine, 3L displacement is the largest we recommend. Some older vehicles will not start easily due to inefficient starter systems.

Do not continue to attempt to start a vehicle if the MB3757 is struggling to start it. This could overheat or damage the unit because it is basically short-circuiting the unit.

9