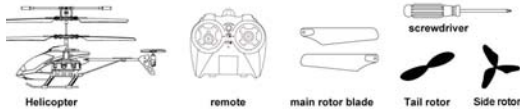


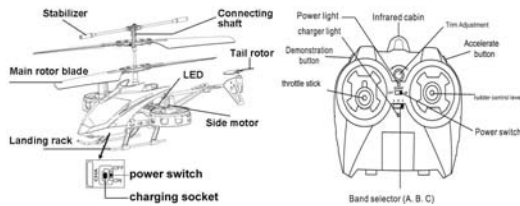
4 Channel Infra-Red Mini Helicopter

GT-3386

Includes:



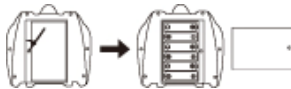
Parts Description:



Helicopter includes a 3.7V 180mAh Li-Po battery
Remote requires 6 x AA batteries

Controller:

Open the battery cover by removing the screw using the screwdriver provided. Insert 6 x AA batteries, place them in the correct polarity.



Charging the helicopter:

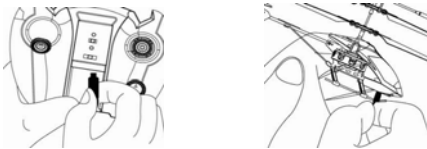
While the helicopter is off, turn on the remote and slide open the cover located on the front.

Remove the cable and connect it to the helicopter's charging socket.

The LED indicator on the remote will illuminate during while charging.

The recommended charge time is 40 minutes.

Once the helicopter's battery is fully charge, the LED indicator will switch off.

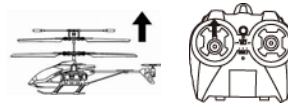


- **NOTE:** Please charge the helicopter to full before and after use.

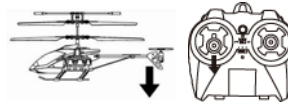
Selecting a frequency (A, B, C):

While the remote is off, select frequency A, B or C by moving the position of the slide switch. Turn on the helicopter, during this time the LED on the front will blink. Then move down the 'Gear Lever' (left stick) while switching the remote on. The LED on the front of the helicopter will become solid to indicate the selected frequency has been accepted. Then let go of the 'Gear Lever'.

Controlling the helicopter:



Ascend:
Move the gear lever up



Descend:
Move the gear lever down

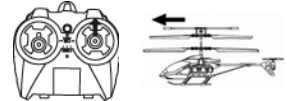


Strife left:
Move the gear lever left

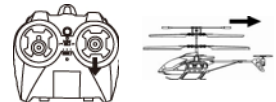


Strife right:
Move the gear lever right

Forward:
Move the direction stick forward



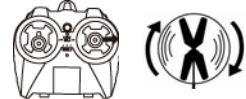
Backward:
Move the direction stick backward



Turn Left:
Move the direction stick left



Turn Right:
Move the direction stick right



- **NOTE:** If the helicopter is unstable during flight, then use the 'Trim Adjust' knob. Adjust the knobs position to help stabilise the helicopter while flying.