

# RESPONSE

## Wireless Infrared Reversing Camera

For use with QM-8046

**QM-8047**



**User Manual**

## IMPORTANT SAFETY INSTRUCTIONS

If you are not confident working with 12V/24V DC vehicle wiring, removing and reinstalling interior panels, carpeting, dashboards or other components of your vehicle, contact the vehicles manufacturer, or consider having the camera system professionally installed.

Do not attempt to open, modify or repair the product

Please read through the entire user manual before installation.

## INSTALLATION

*These instructions are only meant as a general guide due to the difference in vehicle makes and models. For specific information, please contact your vehicles manufacturer.*

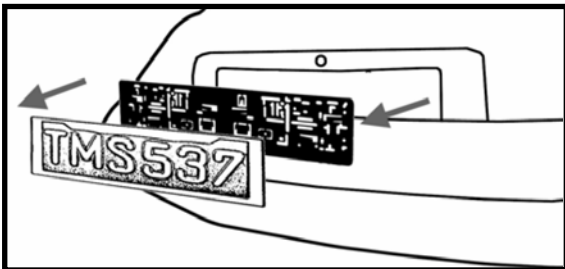
### Camera Installation

The camera can be tilted vertically to adjust the viewing angle. Make sure that its field of view is not obstructed. There are several ways to mount the camera on the back of your car, but the most convenient is to mount it near the license plate (as shown).

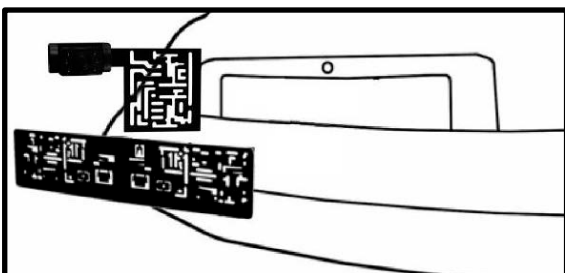
*Please note: On some vehicles it may not be possible to mount the camera near the license plate. You may have to find another spot at the back of your vehicle to mount it.*



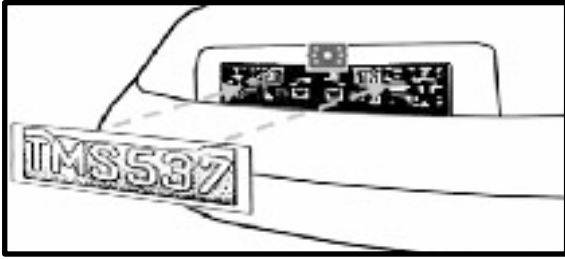
1. Remove the rear license plate, and then loosen the bolts/screws of the license plate.



2. Position the mounting plate of the camera behind the license plate bracket. Secure both license plate bracket and mounting plate with the license plate bracket bolts/screws.



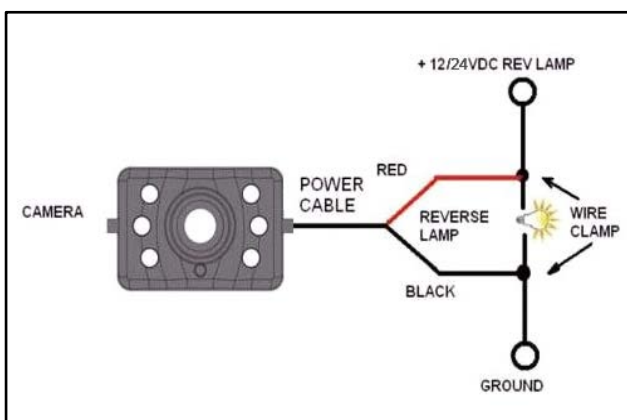
3. Reinsert the license plate on the license plate bracket.



4. Choose a routing path for the camera's power cable through the vehicle's body to the reverse light circuit.
5. Some vehicles may have a hole available to pass the wire through the trunk, otherwise you may need to drill a hole close to where the power cable is attached to the camera. Once you have chosen where the cable will enter the vehicle's body, remove the camera.
6. Remove the license plate and camera before drilling.

*ATTENTION: Before drilling any holes, remove the camera and the license plate and carefully examine the area around and behind the installation position. Make sure that there are no parts that can be damaged (especially electrical cables, components of the vehicle's fuel system, or any liquid tanks). Please take every reasonable precaution. Choose a drill that is suitable for the supplied grommet and material.*

7. After drilling the hole, insert the supplied grommet and pass the camera cables through the grommet into the vehicle.
8. Next, you'll need to find the vehicle's reversing light. To locate the reverse light's 12/24V (+) wire, you may need to contact your vehicle manufacturer for wiring diagrams and use a multimeter to determine the positive from the negative wire. Once you have done this, ensure your ignition is turned off and the negative cable (ground -) of your battery is disconnected.
9. You will have to route the camera cables to the location of your reverse light wires. Securely fasten the power cable to prevent it from being caught on any vehicle components such as the trunk hinge. NEVER route the cable on the outside of the vehicle!
10. Connect the camera's positive wire to the positive (+) of the reverse lamp, and the negative wire to the negative (ground) of the reverse lamp. Ensure that the wires are connected strongly.



11. Reinstall the reverse lights; secure all the wires with cable ties or electrical tape.

12. Re-attach the negative cable of your battery.

## THE SYSTEM

1. Turn the ignition to the accessory position – do not start the vehicle.
2. Put the car into reverse without releasing the handbrake. The system should start up automatically, if not press the power button on the monitor.
3. If it hasn't already been done, please pair your camera(s) to the monitor (as described in the section OPERATION).
4. After testing (and re-adjusting the unit if necessary), all cabling should be installed permanently: route all wires behind interior panels or under carpeting. Use the supplied cable ties to keep excess wires neat and compact.

*NOTE: Under extremely bright light conditions, the screen image may take a few seconds to stabilize. Please wait until the image has stabilized before reversing your vehicle.*

## DESCRIPTION



## OPERATION OF MAIN UNIT QM-8046

### General Usage

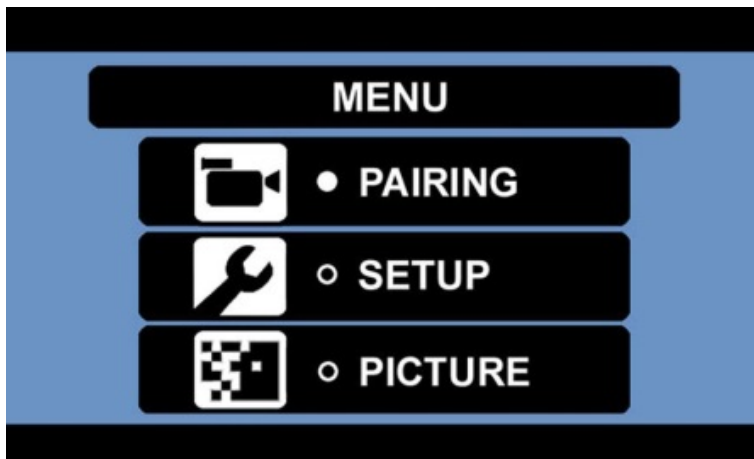
Select the desired menu item by using the UP/DOWN buttons. Confirm your choice with the OK button. Press the MENU button to exit a submenu, or wait a few seconds without any input to exit automatically.

### Power Button

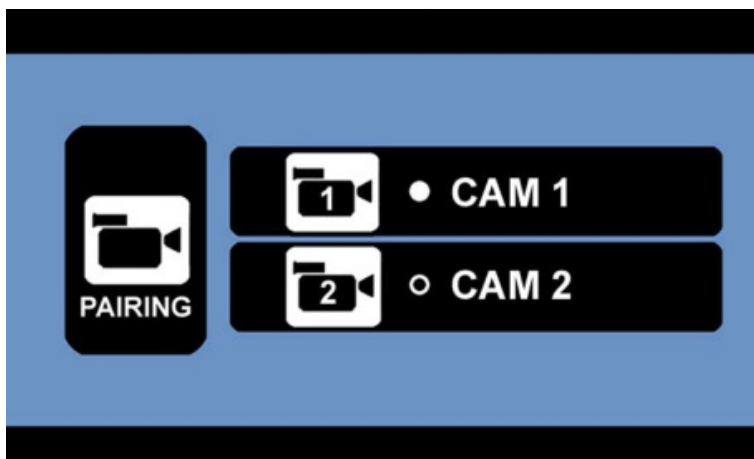
Press the POWER button to power-on the monitor. The screen on the monitor will turn on automatically when the vehicle is in reverse gear (when already paired to the cameras). When the monitor is on and gets a signal, the blue LED will light up, otherwise it will blink. When the monitor is off, no picture will appear on the screen and the blue LED will be off.

### Using the Pairing Menu

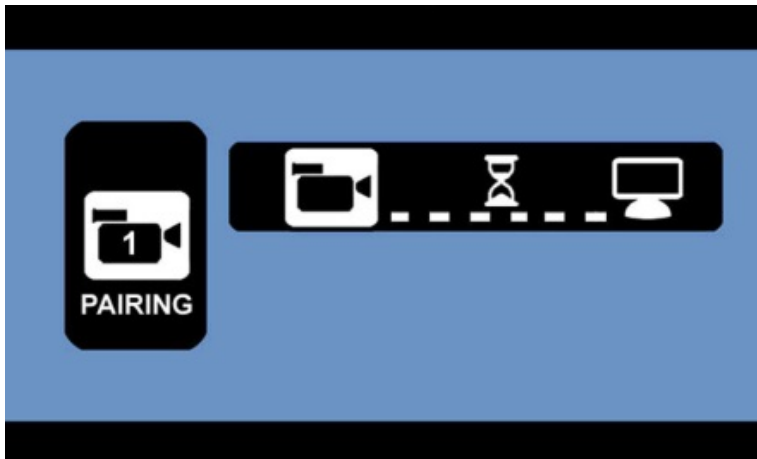
- Press the MENU button to enter the main menu screen.



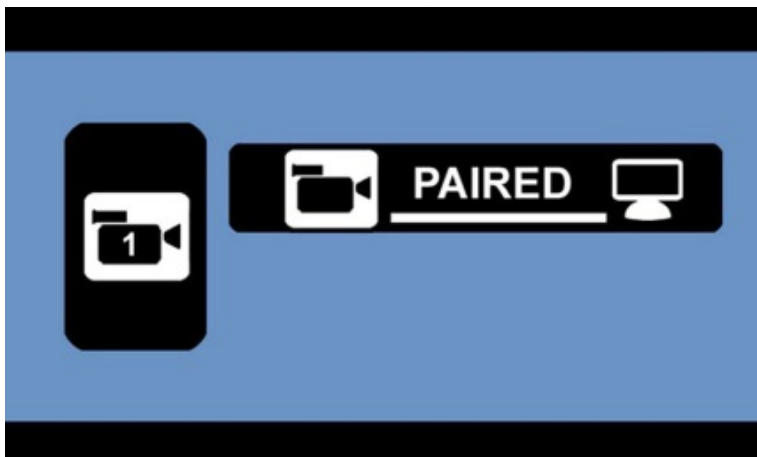
- Here you can pair up to 2 cameras. Select CAM1 or CAM2 and press the OK button to start the pairing process.



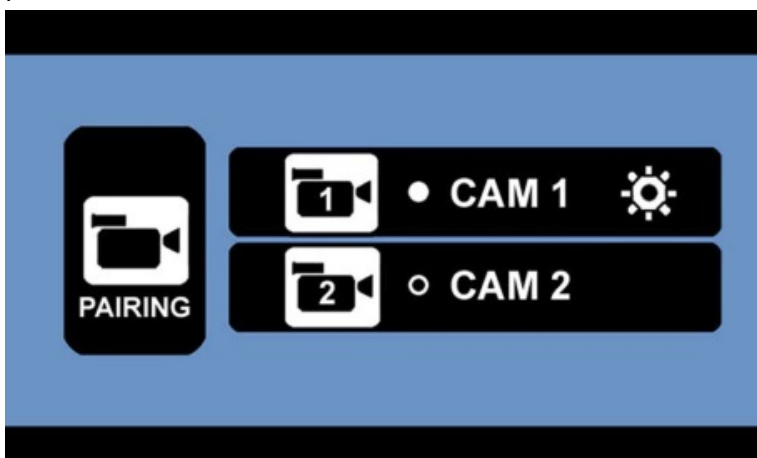
- The device is now ready to pair to the camera (example: CAM1). Now press the rubber button at the bottom of the camera.



- The screen will show that the pairing has been successful.

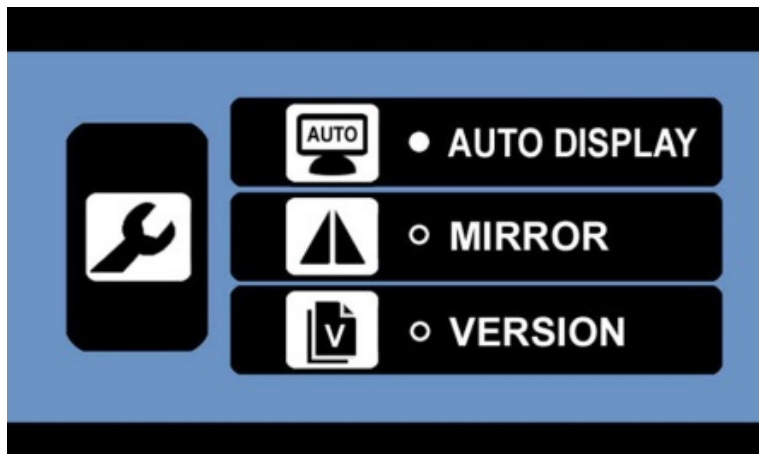


- Back in the pairing menu, a symbol will appear next to the paired cameras. The unit will now pair automatically to the camera when powered on. If you have 2 cameras, please repeat the pairing process as described. Press the MENU button to exit.

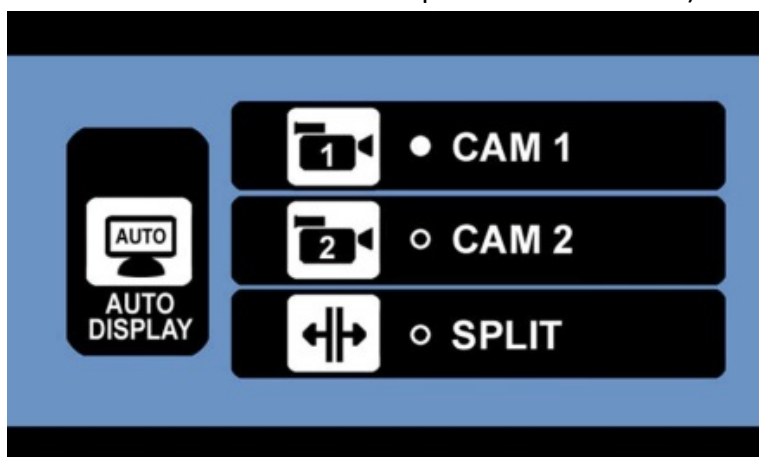


## Using the Setup Menu

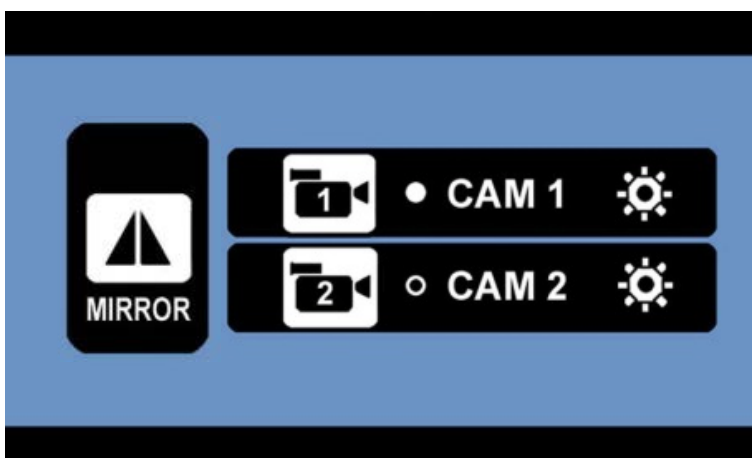
- Select the desired sub-menu with the UP/DOWN buttons and confirm with the OK button. The respective functions of the sub-menus are being described below.



- Auto Display; this setting allows you to set your main view. The selected camera (CAM1 or CAM2) will be displayed automatically when backing up. In order to show the picture of both cameras at the same time, please SPLIT in the menu (only if both signals can be received – otherwise the monitor will show the available picture in full screen).



- Mirror; select CAM1 or CAM2 in order to mirror the displayed picture horizontally or vertically.

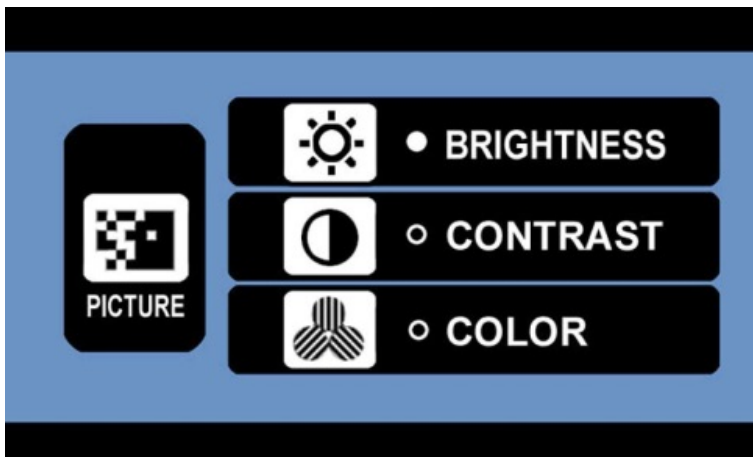


- Version; shows the software version of the monitor system.



### Using the Picture Menu

- After selecting the desired camera, you can adjust the brightness, contrast or colour of the displayed picture. Choose the desired function with the UP/DOWN buttons, confirm by pressing the OK button and change the values with the arrow buttons. Save the settings with the OK button and exit the screen by pressing the MENU button.



### Using the LINES button

This camera system has the option to show guidelines on the display. This may help you to visually estimate the distances between objects and your car. By pressing the LINES button, you can switch this option on and off.





## Using Nightvision

The cameras have an automatic Nightvision infrared function; During night time or in dark areas the IR LEDs will turn on automatically.

*ATTENTION: Do not look directly into the IR LED light as this can be harmful to your eyes.*

Distributed by:  
TechBrands by Electus Distribution Pty. Ltd.  
320 Victoria Rd, Rydalmere  
NSW 2116 Australia  
Ph: 1300 738 555  
Int'l: +61 2 8832 3200  
Fax: 1300 738 500  
[www.techbrands.com](http://www.techbrands.com)