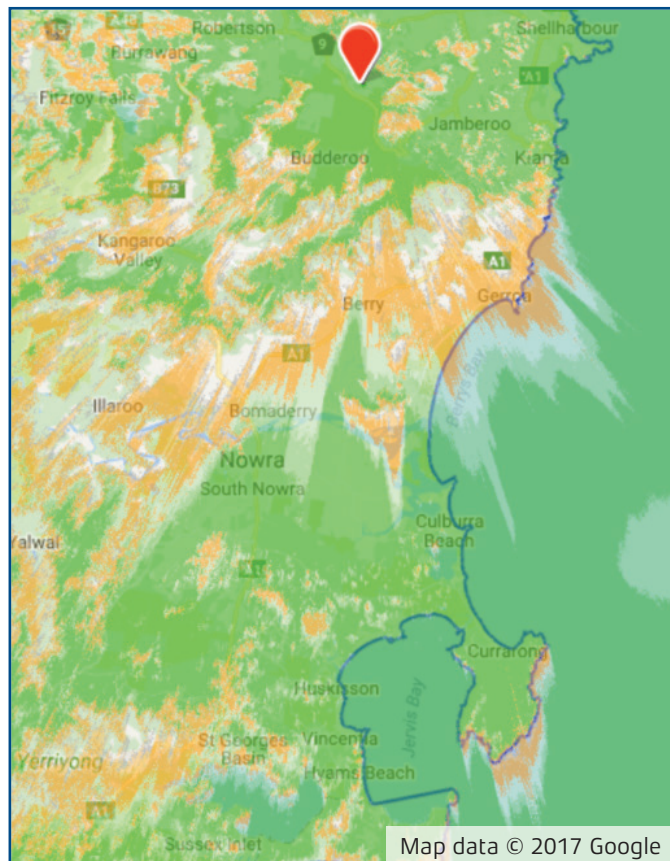


# KINGRAY DIGITAL TV ANTENNA GUIDE

## WOLLONGONG & NOWRA NSW



**Main Coverage**  
KMLP01/K-PANEL

**Adequate Coverage**  
K-PANEL

| Station Name            | Channel |
|-------------------------|---------|
| ABC                     | 35      |
| SBS                     | 39      |
| Prime                   | 38      |
| WIN                     | 36      |
| Southern Cross Austereo | 37      |

- Transmitter is located at KNIGHTS HILL  
- Mount antenna in the horizontal position

- Disclaimer: This coverage is indicative only.  
Reception can be affected by multiple external factors.  
\* Best suited for use within 10km of this transmitter.

### Recommended Kingray Antennas for this transmitter



K-PANEL/LT3153



KMLP01/LT3151\*

- Kingray Accessories:**
- MDA15WDP / LT3257 (Masthead amp with 15dB gain & LTE filter)
  - MHW35WDP / LT3251 (Masthead amp with 35dB gain & LTE filter)
  - FL694LP / LT3067 (Inline filter with 55dB LTE rejection)

1300 463 463 [kingray.net.au](http://kingray.net.au)

A division of Standard Communications Pty Ltd.  
Head Office: PO Box 96, Winston Hills, NSW 2153, Australia.  
New Zealand: PO Box 58446 Botany, Auckland, 2163, NZ. T: (09) 274 0955.  
All international enquiries email: [export@gme.net.au](mailto:export@gme.net.au)

